

# STADION BREŽICE

UMETNA TRAVA

$E_{avg} = 360lx > 350lx$

$U_o = 0,72 > 0,6$

$m.f. = 0,92$

Kontaktna oseba:

Št. naročila:

Podjetje:

Št. stranke:

Date: 19.02.2020

Operator: Dimitrij Hrast, dipl.ing.el.

DISANO Adria

 Operator Dimitrij Hrast, dipl.ing.el.  
 Telephone  
 Fax  
 e-Mail

## Table of contents

### STADION BREŽICE

Project Cover	1
Table of contents	2
<b>DISANO ILLUMINAZIONE -- 2197 FORUM 1200mA 4000K CRI70 Oslon-Square ...</b>	
Luminaire Data Sheet	3
<b>DISANO ILLUMINAZIONE -- 2190 FORUM 1200mA -4000K CRI70 Oslon_Square...</b>	
Luminaire Data Sheet	4
<b>DISANO ILLUMINAZIONE -- 2191 FORUM 1200mA 4000K CRI70 Oslon-Square ...</b>	
Luminaire Data Sheet	5
<b>Zunanje prizorišče 1</b>	
Planning data	6
Luminaire parts list	7
Luminaires (layout plan)	8
Sport Luminaires (Coordinates List)	9
False Colour Rendering	11
<b>Exterior Surfaces</b>	
<b>Nogometno igrišče 1 Raster izračuna (PA)</b>	
Summary	12
Isolines (E, Horizontal)	13
Value Chart (E, Horizontal)	14

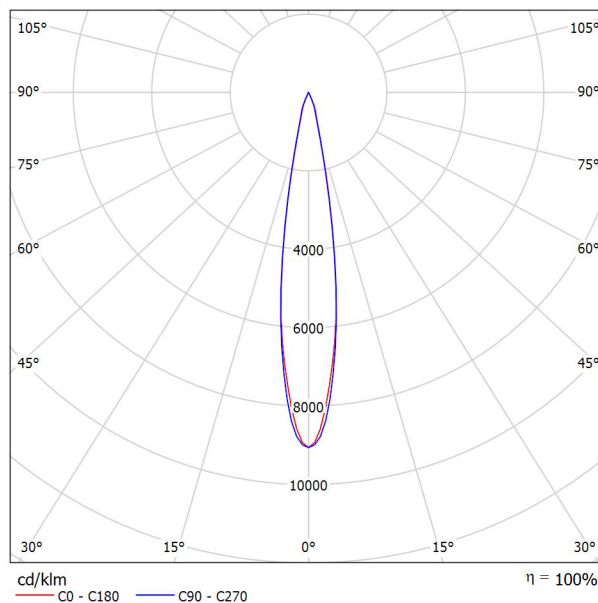
DISANO Adria

 Operator Dimitrij Hrast, dipl.ing.el.  
 Telephone  
 Fax  
 e-Mail

## DISANO ILLUMINAZIONE -- 2197 FORUM 1200mA 4000K CRI70 Oslon-Square N4-N5 S / Luminaire Data Sheet

Luminous emittance 1:

See our luminaire catalog for an image of the luminaire.



Luminaire classification according to CIE: 100  
 CIE flux code: 99 100 100 100 100

Luminous emittance 1:

Glare Evaluation According to UGR												
p Ceiling		70	70	50	50	30	70	70	50	50	30	
p Walls		50	30	50	30	30	50	30	50	30	30	
p Floor		20	20	20	20	20	20	20	20	20	20	
Room Size X Y		Viewing direction at right angles to lamp axis					Viewing direction parallel to lamp axis					
2H	2H	2.7	3.3	2.9	3.5	3.7	2.3	3.0	2.6	3.2	3.4	
	3H	3.6	4.2	3.9	4.4	4.6	3.3	3.9	3.6	4.1	4.4	
	4H	3.9	4.5	4.2	4.7	5.0	3.8	4.3	4.1	4.6	4.8	
	6H	4.2	4.7	4.5	5.0	5.2	4.0	4.5	4.3	4.8	5.0	
	8H	4.3	4.7	4.6	5.0	5.3	4.0	4.5	4.3	4.8	5.1	
4H	12H	4.3	4.8	4.7	5.1	5.4	4.0	4.5	4.4	4.8	5.1	
	2H	3.0	3.6	3.3	3.8	4.1	2.8	3.3	3.1	3.6	3.8	
	3H	4.1	4.6	4.5	4.9	5.2	3.9	4.4	4.3	4.7	5.0	
	4H	4.6	5.0	5.0	5.3	5.7	4.5	4.9	4.8	5.2	5.5	
	6H	4.9	5.2	5.3	5.6	6.0	4.8	5.1	5.2	5.4	5.8	
8H	8H	5.0	5.3	5.4	5.7	6.1	4.8	5.1	5.2	5.5	5.9	
	12H	5.1	5.4	5.5	5.8	6.2	4.9	5.1	5.3	5.5	5.9	
	4H	4.7	5.0	5.1	5.4	5.8	4.6	4.9	5.0	5.3	5.7	
	6H	5.1	5.3	5.5	5.7	6.2	5.0	5.2	5.4	5.6	6.0	
	8H	5.2	5.4	5.7	5.9	6.3	5.1	5.2	5.5	5.7	6.1	
12H	12H	5.4	5.5	5.9	6.0	6.5	5.1	5.2	5.6	5.7	6.2	
	4H	4.7	5.0	5.1	5.4	5.8	4.6	4.9	5.0	5.2	5.7	
	6H	5.1	5.3	5.5	5.7	6.2	5.0	5.1	5.4	5.6	6.1	
	8H	5.3	5.4	5.7	5.9	6.3	5.1	5.2	5.6	5.7	6.2	
Variation of the observer position for the luminaire distances S												
S = 1.0H		+0.6 / -0.5					+0.7 / -0.5					
S = 1.5H		+1.4 / -0.8					+1.4 / -0.7					
S = 2.0H		+2.4 / -1.4					+2.4 / -1.4					
Standard table		BK04					BK04					
Correction		-12.4					-12.6					
Summand												
Corrected Glare Indices referring to 86281lm Total Luminous Flux												

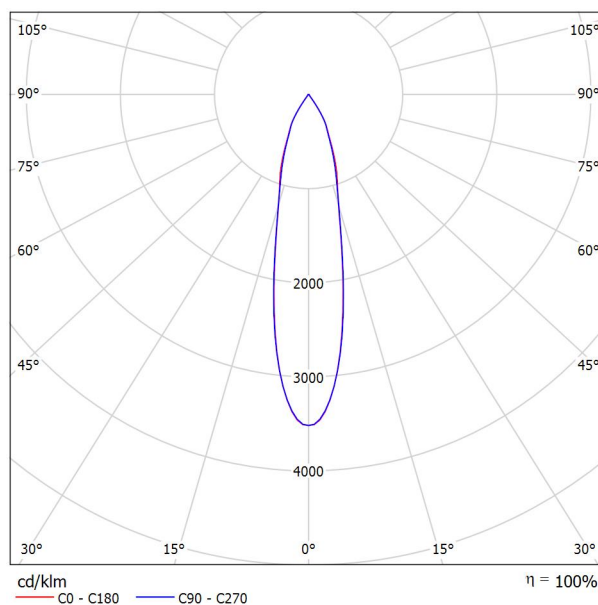
DISANO Adria

Operator Dimitrij Hrast, dipl.ing.el.  
Telephone  
Fax  
e-Mail

## DISANO ILLUMINAZIONE -- 2190 FORUM 1200mA -4000K CRI70 Oslon\_Square N4-N5 MS / Luminaire Data Sheet

Luminous emittance 1:

See our luminaire catalog for an image of the luminaire.



Luminaire classification according to CIE: 100  
CIE flux code: 98 99 100 100 100

Luminous emittance 1:

Glare Evaluation According to UGR												
p Ceiling		70	70	50	50	30	70	70	50	50	30	
p Walls		50	30	50	30	30	50	30	50	30	30	
p Floor		20	20	20	20	20	20	20	20	20	20	
Room Size X Y		Viewing direction at right angles to lamp axis					Viewing direction parallel to lamp axis					
2H	2H	15.9	16.5	16.1	16.7	16.9	15.7	16.4	16.0	16.6	16.8	
	3H	15.9	16.5	16.2	16.7	16.9	15.7	16.3	16.0	16.5	16.8	
	4H	15.9	16.4	16.2	16.7	16.9	15.7	16.3	16.0	16.5	16.8	
	6H	15.8	16.4	16.2	16.6	16.9	15.7	16.2	16.0	16.5	16.7	
	8H	15.8	16.3	16.1	16.6	16.9	15.6	16.1	16.0	16.4	16.7	
	12H	15.8	16.2	16.1	16.5	16.9	15.6	16.1	15.9	16.4	16.7	
4H	2H	15.8	16.3	16.1	16.6	16.8	15.6	16.2	15.9	16.4	16.7	
	3H	15.8	16.3	16.1	16.6	16.9	15.6	16.1	16.0	16.4	16.7	
	4H	15.8	16.2	16.2	16.5	16.9	15.6	16.0	16.0	16.4	16.7	
	6H	15.8	16.1	16.2	16.5	16.9	15.6	16.0	16.0	16.3	16.7	
	8H	15.8	16.1	16.2	16.4	16.8	15.6	15.9	16.0	16.3	16.7	
	12H	15.7	16.0	16.2	16.4	16.8	15.6	15.8	16.0	16.2	16.6	
8H	4H	15.7	16.0	16.2	16.4	16.8	15.6	15.9	16.0	16.3	16.7	
	6H	15.7	15.9	16.2	16.4	16.8	15.6	15.8	16.0	16.2	16.6	
	8H	15.7	15.9	16.2	16.3	16.8	15.5	15.7	16.0	16.2	16.6	
	12H	15.7	15.8	16.1	16.3	16.8	15.5	15.6	16.0	16.1	16.6	
	4H	15.7	16.0	16.1	16.4	16.8	15.5	15.8	16.0	16.2	16.6	
	6H	15.7	15.9	16.2	16.3	16.8	15.5	15.7	16.0	16.1	16.6	
12H	8H	15.7	15.8	16.1	16.3	16.8	15.5	15.6	16.0	16.1	16.6	
	12H	15.7	15.8	16.1	16.3	16.8	15.5	15.6	16.0	16.1	16.6	
Variation of the observer position for the luminaire distances S												
S = 1.0H		+6.1 / -5.6					+6.1 / -5.9					
S = 1.5H		+8.8 / -5.9					+8.8 / -6.3					
S = 2.0H		+10.8 / -6.6					+10.8 / -6.9					
Standard table		BK00					BK00					
Correction		-2.6					-2.7					
Summand												
Corrected Glare Indices referring to 91278lm Total Luminous Flux												

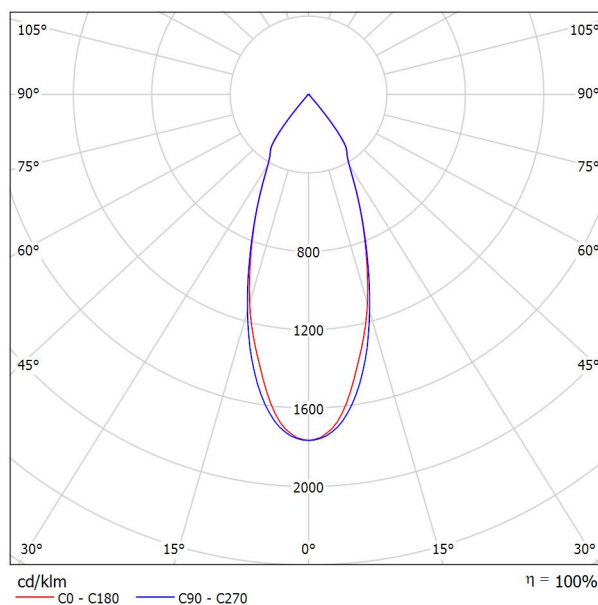
DISANO Adria

 Operator Dimitrij Hrast, dipl.ing.el.  
 Telephone  
 Fax  
 e-Mail

## DISANO ILLUMINAZIONE -- 2191 FORUM 1200mA 4000K CRI70 Oslon-Square N4-N5 M / Luminaire Data Sheet

Luminous emittance 1:

See our luminaire catalog for an image of the luminaire.



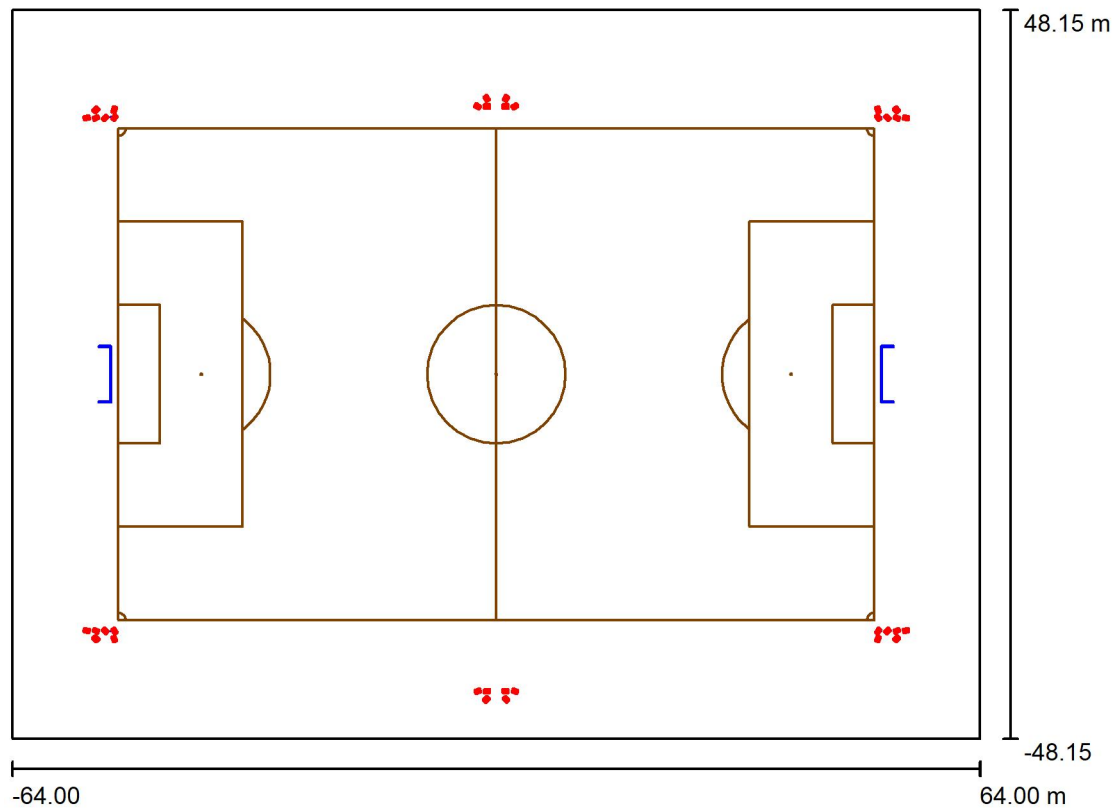
Luminaire classification according to CIE: 100  
 CIE flux code: 98 99 100 100 100

Luminous emittance 1:

Glare Evaluation According to UGR												
p Ceiling		70	70	50	50	30	70	70	50	50	30	
p Walls		50	30	50	30	30	50	30	50	30	30	
p Floor		20	20	20	20	20	20	20	20	20	20	
Room Size X Y		Viewing direction at right angles to lamp axis					Viewing direction parallel to lamp axis					
2H	2H	19.7	20.3	19.9	20.5	20.7	19.7	20.3	19.9	20.5	20.7	
	3H	19.5	20.1	19.8	20.4	20.6	19.6	20.2	19.8	20.4	20.6	
	4H	19.5	20.1	19.8	20.3	20.6	19.5	20.1	19.8	20.3	20.6	
	6H	19.5	20.0	19.8	20.2	20.5	19.5	20.0	19.8	20.3	20.6	
	8H	19.4	19.9	19.8	20.2	20.5	19.5	20.0	19.8	20.2	20.5	
	12H	19.4	19.9	19.7	20.2	20.5	19.4	19.9	19.8	20.2	20.5	
4H	2H	19.5	20.0	19.8	20.3	20.5	19.5	20.0	19.8	20.3	20.5	
	3H	19.3	19.8	19.7	20.1	20.4	19.4	19.8	19.7	20.1	20.4	
	4H	19.3	19.7	19.7	20.0	20.4	19.3	19.7	19.7	20.1	20.4	
	6H	19.3	19.6	19.7	20.0	20.4	19.3	19.7	19.7	20.0	20.4	
	8H	19.3	19.6	19.7	20.0	20.4	19.3	19.6	19.7	20.0	20.4	
	12H	19.3	19.5	19.7	19.9	20.3	19.3	19.5	19.7	19.9	20.4	
8H	4H	19.2	19.5	19.6	19.9	20.3	19.2	19.5	19.7	19.9	20.3	
	6H	19.2	19.4	19.7	19.9	20.3	19.2	19.5	19.7	19.9	20.3	
	8H	19.2	19.4	19.7	19.8	20.3	19.3	19.4	19.7	19.9	20.3	
	12H	19.2	19.4	19.7	19.8	20.3	19.2	19.4	19.7	19.8	20.3	
12H	4H	19.2	19.4	19.6	19.8	20.3	19.2	19.5	19.6	19.9	20.3	
	6H	19.2	19.4	19.7	19.8	20.3	19.2	19.4	19.7	19.8	20.3	
	8H	19.2	19.3	19.7	19.8	20.3	19.2	19.4	19.7	19.8	20.3	
Variation of the observer position for the luminaire distances S												
S = 1.0H		+4.7 / -8.3					+4.7 / -8.3					
S = 1.5H		+7.4 / -8.5					+7.4 / -8.5					
S = 2.0H		+9.4 / -9.0					+9.4 / -8.9					
Standard table		BK00					BK00					
Correction		1.1					1.1					
Summand												
Corrected Glare Indices referring to 86114lm Total Luminous Flux												

DISANO Adria

Operator Dimitrij Hrast, dipl.ing.el.  
 Telephone  
 Fax  
 e-Mail

**Zunanje prizorišče 1 / Planning data**

Maintenance factor: 0.92, ULR (Upward Light Ratio): 1.0%

Scale 1:1000

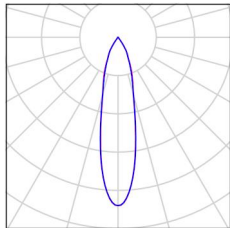
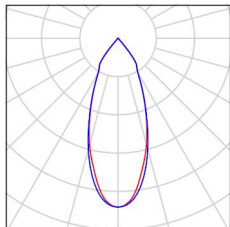
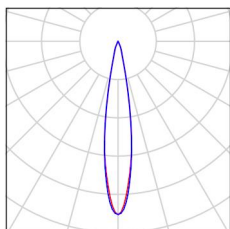
**Luminaire Parts List**

No.	Pieces	Designation (Correction Factor)	$\Phi$ (Luminaire) [lm]	$\Phi$ (Lamps) [lm]	P [W]
1	30	DISANO ILLUMINAZIONE -- 2190 FORUM 1200mA -4000K CRI70 Oslon_Square N4-N5 MS (1.000)	91205	91278	896.0
2	2	DISANO ILLUMINAZIONE -- 2191 FORUM 1200mA 4000K CRI70 Oslon-Square N4-N5 M (1.000)	86081	86114	896.0
3	4	DISANO ILLUMINAZIONE -- 2197 FORUM 1200mA 4000K CRI70 Oslon-Square N4-N5 S (1.000)	86097	86281	896.0
Total:			3252691	Total: 3255692	32256.0

DISANO Adria

 Operator Dimitrij Hrast, dipl.ing.el.  
 Telephone  
 Fax  
 e-Mail

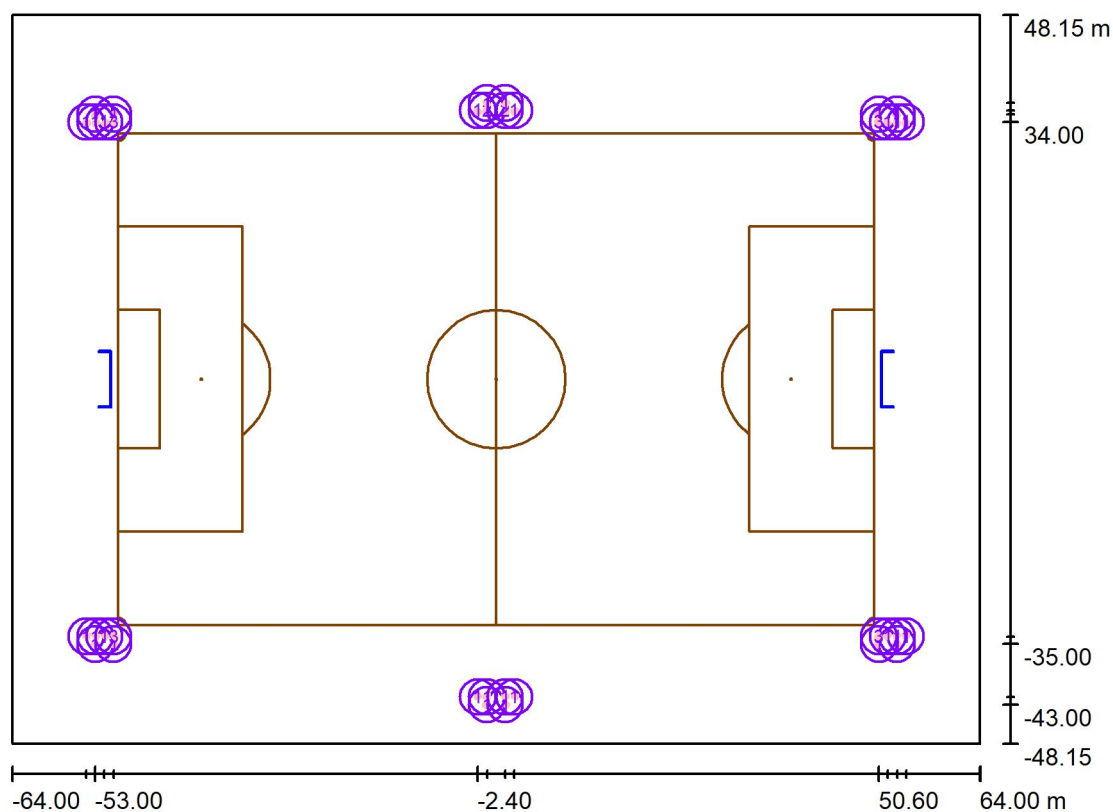
## Zunanje prizorišče 1 / Luminaire parts list

- |           |  |  |   |
|-----------|--|--|---|
| 30 Pieces | DISANO ILLUMINAZIONE -- 2190 FORUM<br>1200mA -4000K CRI70 Oslon_Square N4-N5 MS<br>Article No.: --<br>Luminous flux (Luminaire): 91205 lm<br>Luminous flux (Lamps): 91278 lm<br>Luminaire Wattage: 896.0 W<br>Luminaire classification according to CIE: 100<br>CIE flux code: 98 99 100 100 100<br>Fitting: 1 x 240LED (Correction Factor 1.000). | See our luminaire<br>catalog for an image of<br>the luminaire. |    |
| 2 Pieces  | DISANO ILLUMINAZIONE -- 2191 FORUM<br>1200mA 4000K CRI70 Oslon-Square N4-N5 M<br>Article No.: --<br>Luminous flux (Luminaire): 86081 lm<br>Luminous flux (Lamps): 86114 lm<br>Luminaire Wattage: 896.0 W<br>Luminaire classification according to CIE: 100<br>CIE flux code: 98 99 100 100 100<br>Fitting: 1 x 240LED (Correction Factor 1.000).   | See our luminaire<br>catalog for an image of<br>the luminaire. |    |
| 4 Pieces  | DISANO ILLUMINAZIONE -- 2197 FORUM<br>1200mA 4000K CRI70 Oslon-Square N4-N5 S<br>Article No.: --<br>Luminous flux (Luminaire): 86097 lm<br>Luminous flux (Lamps): 86281 lm<br>Luminaire Wattage: 896.0 W<br>Luminaire classification according to CIE: 100<br>CIE flux code: 99 100 100 100 100<br>Fitting: 1 x 240led (Correction Factor 1.000).  | See our luminaire<br>catalog for an image of<br>the luminaire. |  |

DISANO Adria

Operator Dimitrij Hrast, dipl.ing.el.  
 Telephone  
 Fax  
 e-Mail

## Zunanje prizorišče 1 / Luminaires (layout plan)



Scale 1 : 1000

### Luminaire Parts List

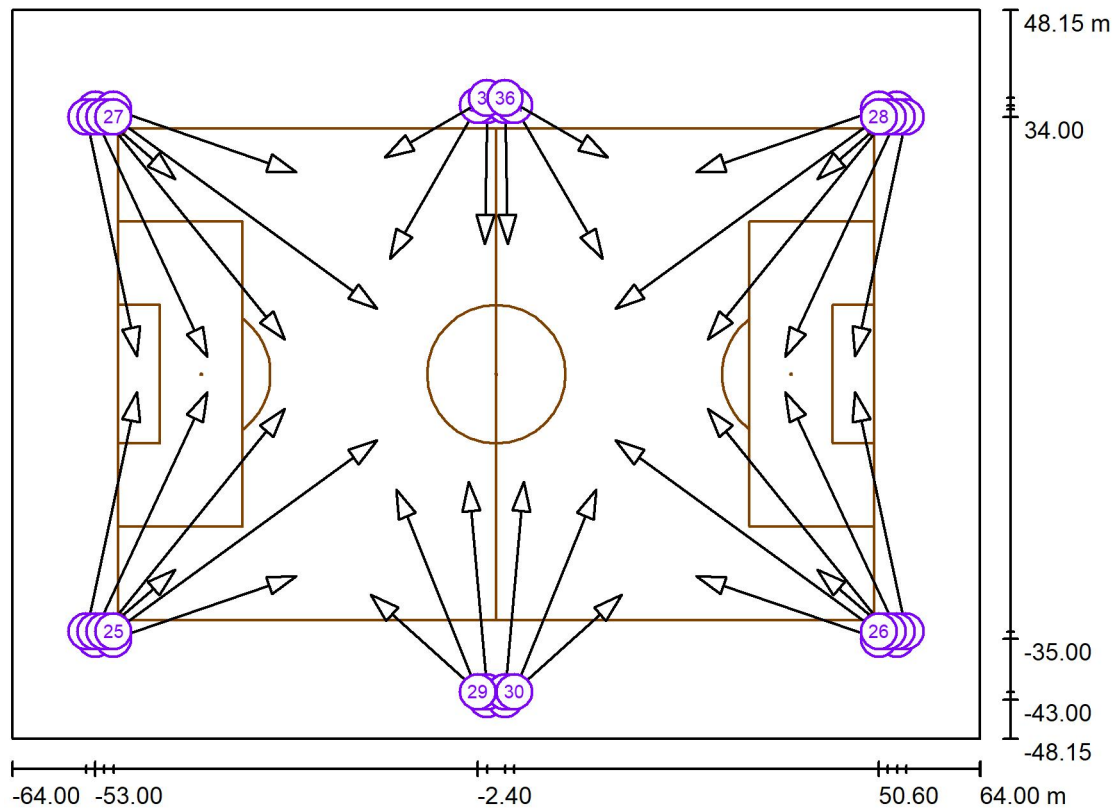
No.	Pieces	Designation
1	30	DISANO ILLUMINAZIONE -- 2190 FORUM 1200mA -4000K CRI70 Oslon_Square N4-N5 MS
2	2	DISANO ILLUMINAZIONE -- 2191 FORUM 1200mA 4000K CRI70 Oslon-Square N4-N5 M
3	4	DISANO ILLUMINAZIONE -- 2197 FORUM 1200mA 4000K CRI70 Oslon-Square N4-N5 S



DISANO Adria

Operator Dimitrij Hrast, dipl.ing.el.  
 Telephone  
 Fax  
 e-Mail

## Zunanje prizorišče 1 / Sport Luminaires (Coordinates List)



### List of the Sport Luminaires

Luminaire	Index	Position [m]			Aiming Point [m]			Angle [°]	Alignment	Pole
		X	Y	Z	X	Y	Z			
DISANO ILLUMINAZIONE -- 2190 FORUM 1200mA -4000K CRI70 Oslo_Square N4-N5 MS	1	-53.000	-35.000	20.000	-42.431	-25.812	0.000	55.0	(C 0, G IMax)	/
DISANO ILLUMINAZIONE -- 2190 FORUM 1200mA -4000K CRI70 Oslo_Square N4-N5 MS	2	53.000	-35.000	20.000	42.431	-25.812	0.000	55.0	(C 0, G IMax)	/
DISANO ILLUMINAZIONE -- 2190 FORUM 1200mA -4000K CRI70 Oslo_Square N4-N5 MS	3	-53.000	35.000	20.000	-42.431	25.812	0.000	55.0	(C 0, G IMax)	/
DISANO ILLUMINAZIONE -- 2190 FORUM 1200mA -4000K CRI70 Oslo_Square N4-N5 MS	4	53.000	35.000	20.000	42.431	25.812	0.000	55.0	(C 0, G IMax)	/

DISANO Adria

 Operator Dimitrij Hrast, dipl.ing.el.  
 Telephone  
 Fax  
 e-Mail

## Zunanje prizorišče 1 / Sport Luminaires (Coordinates List)

### List of the Sport Luminaires

Luminaire	Index	Position [m]			Aiming Point [m]			Angle [°]	Alignment	Pole
		X	Y	Z	X	Y	Z			
DISANO ILLUMINAZIONE -- 2190 FORUM 1200mA -4000K CRI70 Oslon_Square N4-N5 MS	5	-50.600	-35.000	20.000	-26.396	-26.666	0.000	38.0	(C 0, G IMax)	/
DISANO ILLUMINAZIONE -- 2190 FORUM 1200mA -4000K CRI70 Oslon_Square N4-N5 MS	6	50.600	-35.000	20.000	26.396	-26.666	0.000	38.0	(C 0, G IMax)	/
DISANO ILLUMINAZIONE -- 2190 FORUM 1200mA -4000K CRI70 Oslon_Square N4-N5 MS	7	-50.600	35.000	20.000	-26.396	26.666	0.000	38.0	(C 0, G IMax)	/
DISANO ILLUMINAZIONE -- 2190 FORUM 1200mA -4000K CRI70 Oslon_Square N4-N5 MS	8	50.600	35.000	20.000	26.396	26.666	0.000	38.0	(C 0, G IMax)	/
DISANO ILLUMINAZIONE -- 2190 FORUM 1200mA -4000K CRI70 Oslon_Square N4-N5 MS	9	-1.200	-43.000	20.000	-16.591	-29.142	0.000	44.0	(C 0, G IMax)	/
DISANO ILLUMINAZIONE -- 2190 FORUM 1200mA -4000K CRI70 Oslon_Square N4-N5 MS	10	1.200	-43.000	20.000	16.591	-29.142	0.000	44.0	(C 0, G IMax)	/
DISANO ILLUMINAZIONE -- 2190 FORUM 1200mA -4000K CRI70 Oslon_Square N4-N5 MS	11	-54.200	-34.000	21.000	-47.477	-2.369	0.000	33.0	(C 0, G IMax)	/
DISANO ILLUMINAZIONE -- 2190 FORUM 1200mA -4000K CRI70 Oslon_Square N4-N5 MS	12	54.200	-34.000	21.000	47.477	-2.369	0.000	33.0	(C 0, G IMax)	/
DISANO ILLUMINAZIONE -- 2190 FORUM 1200mA -4000K CRI70 Oslon_Square N4-N5 MS	13	-54.200	34.000	21.000	-47.477	2.369	0.000	33.0	(C 0, G IMax)	/
DISANO ILLUMINAZIONE -- 2190 FORUM 1200mA -4000K CRI70 Oslon_Square N4-N5 MS	14	54.200	34.000	21.000	47.477	2.369	0.000	33.0	(C 0, G IMax)	/
DISANO ILLUMINAZIONE -- 2190 FORUM 1200mA -4000K CRI70 Oslon_Square N4-N5 MS	15	-53.000	-34.000	21.000	-38.230	-2.325	0.000	31.0	(C 0, G IMax)	/
DISANO ILLUMINAZIONE -- 2190 FORUM 1200mA -4000K CRI70 Oslon_Square N4-N5 MS	16	53.000	-34.000	21.000	38.230	-2.325	0.000	31.0	(C 0, G IMax)	/
DISANO ILLUMINAZIONE -- 2190 FORUM 1200mA -4000K CRI70 Oslon_Square N4-N5 MS	17	-53.000	34.000	21.000	-38.230	2.325	0.000	31.0	(C 0, G IMax)	/
DISANO ILLUMINAZIONE -- 2190 FORUM 1200mA -4000K CRI70 Oslon_Square N4-N5 MS	18	53.000	34.000	21.000	38.230	2.325	0.000	31.0	(C 0, G IMax)	/
DISANO ILLUMINAZIONE -- 2190 FORUM 1200mA -4000K CRI70 Oslon_Square N4-N5 MS	19	-51.800	-34.000	21.000	-27.958	-4.558	0.000	29.0	(C 0, G IMax)	/
DISANO ILLUMINAZIONE -- 2190 FORUM 1200mA -4000K CRI70 Oslon_Square N4-N5 MS	20	51.800	-34.000	21.000	27.958	-4.558	0.000	29.0	(C 0, G IMax)	/
DISANO ILLUMINAZIONE -- 2190 FORUM 1200mA -4000K CRI70 Oslon_Square N4-N5 MS	21	-51.800	34.000	21.000	-27.958	4.558	0.000	29.0	(C 0, G IMax)	/
DISANO ILLUMINAZIONE -- 2190 FORUM 1200mA -4000K CRI70 Oslon_Square N4-N5 MS	22	51.800	34.000	21.000	27.958	4.558	0.000	29.0	(C 0, G IMax)	/
DISANO ILLUMINAZIONE -- 2190 FORUM 1200mA -4000K CRI70 Oslon_Square N4-N5 MS	23	-1.200	-42.000	21.000	-3.629	-14.238	0.000	37.0	(C 0, G IMax)	/
DISANO ILLUMINAZIONE -- 2190 FORUM 1200mA -4000K CRI70 Oslon_Square N4-N5 MS	24	1.200	-42.000	21.000	3.629	-14.238	0.000	37.0	(C 0, G IMax)	/
DISANO ILLUMINAZIONE -- 2197 FORUM 1200mA 4000K CRI70 Oslon-Square N4-N5 S	25	-50.600	-34.000	21.000	-15.767	-8.692	0.000	26.0	(C 0, G IMax)	/
DISANO ILLUMINAZIONE -- 2197 FORUM 1200mA 4000K CRI70 Oslon-Square N4-N5 S	26	50.600	-34.000	21.000	15.767	-8.692	0.000	26.0	(C 0, G IMax)	/
DISANO ILLUMINAZIONE -- 2197 FORUM 1200mA 4000K CRI70 Oslon-Square N4-N5 S	27	-50.600	34.000	21.000	-15.767	8.692	0.000	26.0	(C 0, G IMax)	/

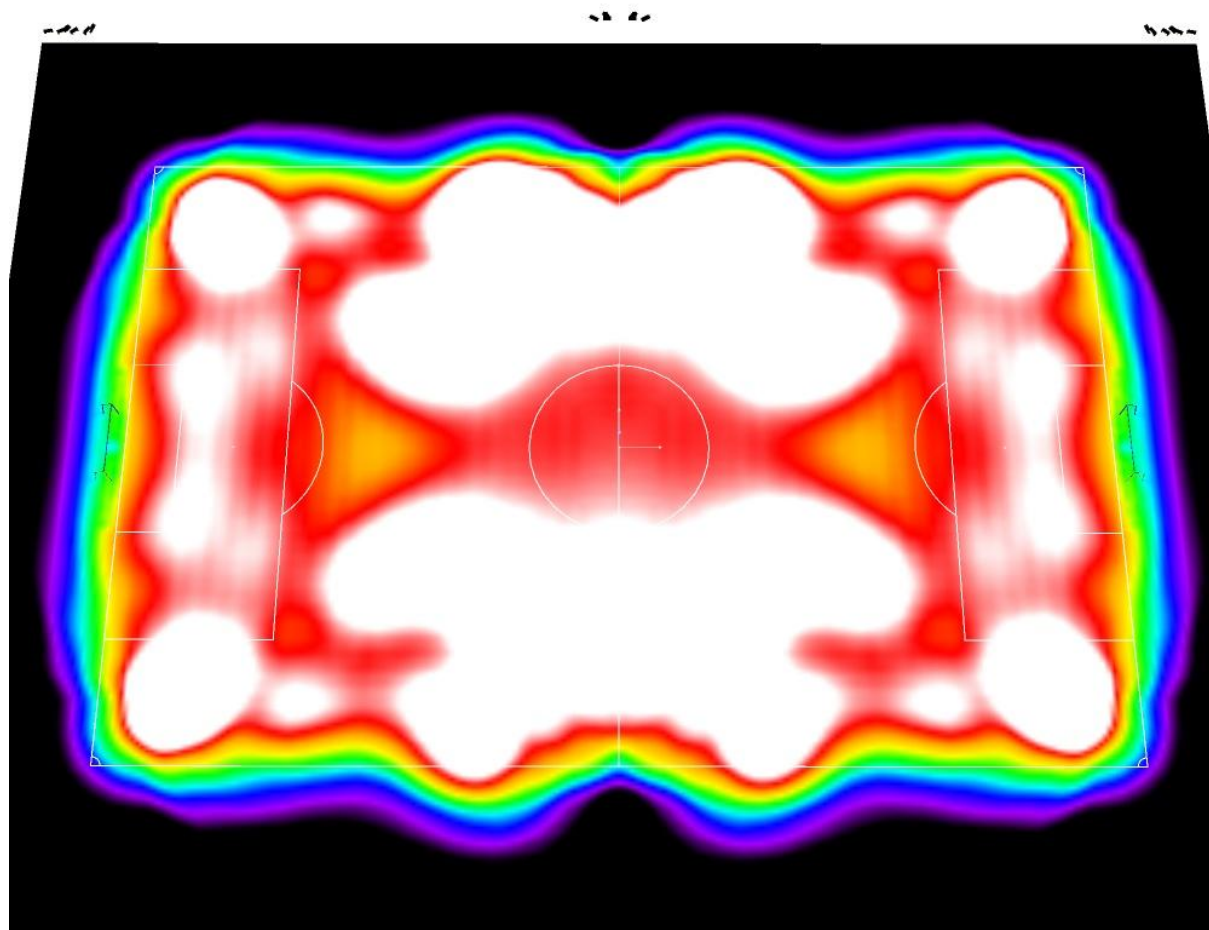
DISANO ILLUMINAZIONE -- 2197 FORUM 1200mA 4000K CRI70 Oslo-Square N4-N5 S	28	50.600	34.000	21.000	15.767	8.692	0.000	26.0	(C 0, G IMax)	/
DISANO ILLUMINAZIONE -- 2190 FORUM 1200mA -4000K CRI70 Oslo-Square N4-N5 MS	29	-2.400	-42.000	21.000	-13.228	-15.201	0.000	36.0	(C 0, G IMax)	/
DISANO ILLUMINAZIONE -- 2190 FORUM 1200mA -4000K CRI70 Oslo-Square N4-N5 MS	30	2.400	-42.000	21.000	13.228	-15.201	0.000	36.0	(C 0, G IMax)	/
DISANO ILLUMINAZIONE -- 2191 FORUM 1200mA 4000K CRI70 Oslo-Square N4-N5 M	31	-1.200	35.500	21.000	-1.519	17.248	0.000	49.0	(C 0, G IMax)	/
DISANO ILLUMINAZIONE -- 2191 FORUM 1200mA 4000K CRI70 Oslo-Square N4-N5 M	32	1.200	35.500	21.000	1.519	17.248	0.000	49.0	(C 0, G IMax)	/
DISANO ILLUMINAZIONE -- 2190 FORUM 1200mA -4000K CRI70 Oslo-Square N4-N5 MS	33	-2.400	35.500	21.000	-14.061	15.302	0.000	42.0	(C 0, G IMax)	/
DISANO ILLUMINAZIONE -- 2190 FORUM 1200mA -4000K CRI70 Oslo-Square N4-N5 MS	34	2.400	35.500	21.000	14.061	15.302	0.000	42.0	(C 0, G IMax)	/
DISANO ILLUMINAZIONE -- 2190 FORUM 1200mA -4000K CRI70 Oslo-Square N4-N5 MS	35	-1.200	36.500	20.000	-14.732	28.687	0.000	52.0	(C 0, G IMax)	/
DISANO ILLUMINAZIONE -- 2190 FORUM 1200mA -4000K CRI70 Oslo-Square N4-N5 MS	36	1.200	36.500	20.000	14.732	28.687	0.000	52.0	(C 0, G IMax)	/



DISANO Adria

Operator Dimitrij Hrast, dipl.ing.el.  
Telephone  
Fax  
e-Mail

## Zunanje prizorišče 1 / False Colour Rendering



100

131.25

162.50

193.75

225

256.25

287.50

318.75

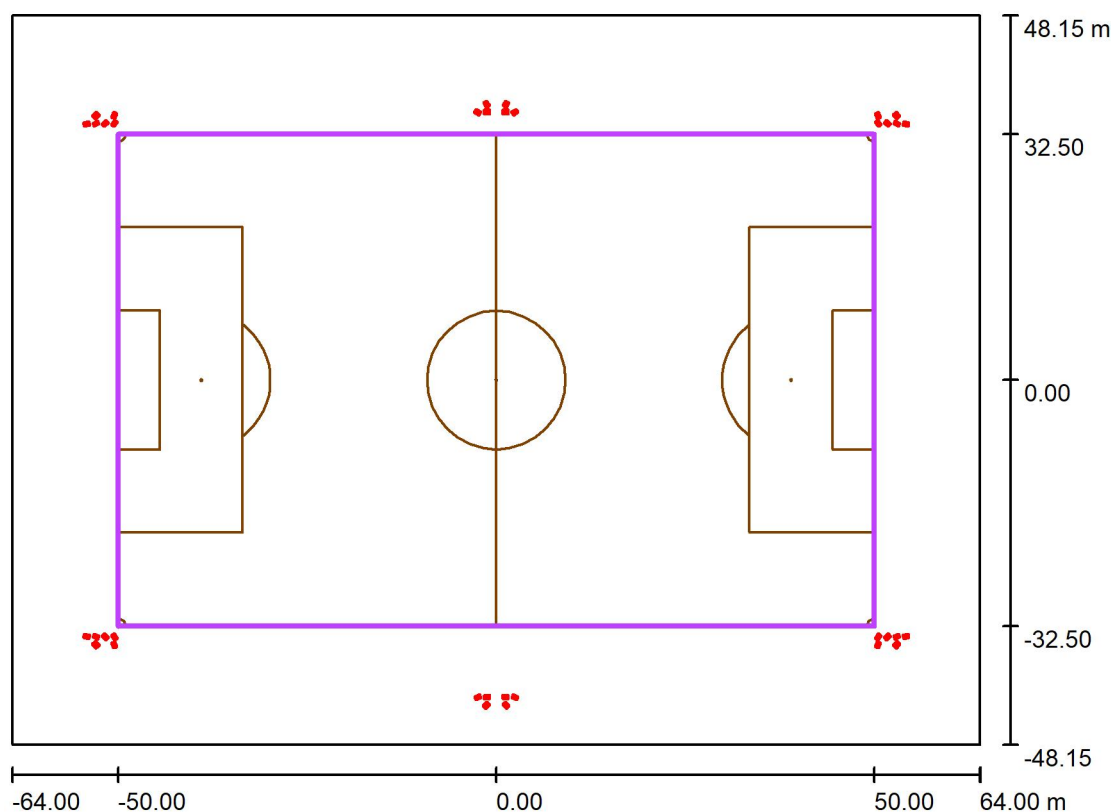
350

lx

DISANO Adria

Operator Dimitrij Hrast, dipl.ing.el.  
 Telephone  
 Fax  
 e-Mail

## Zunanje prizorišče 1 / Nogometno igrišče 1 Raster izračuna (PA) / Summary



Scale 1 : 1000

Position: (0.000 m, 0.000 m, 0.000 m)  
 Size: (100.000 m, 65.000 m)  
 Rotation: (0.0°, 0.0°, 0.0°)  
 Type: Normal, Grid: 19 x 13 Points  
 Belongs to the following sport arena: Nogometno igrišče 1

### Results overview

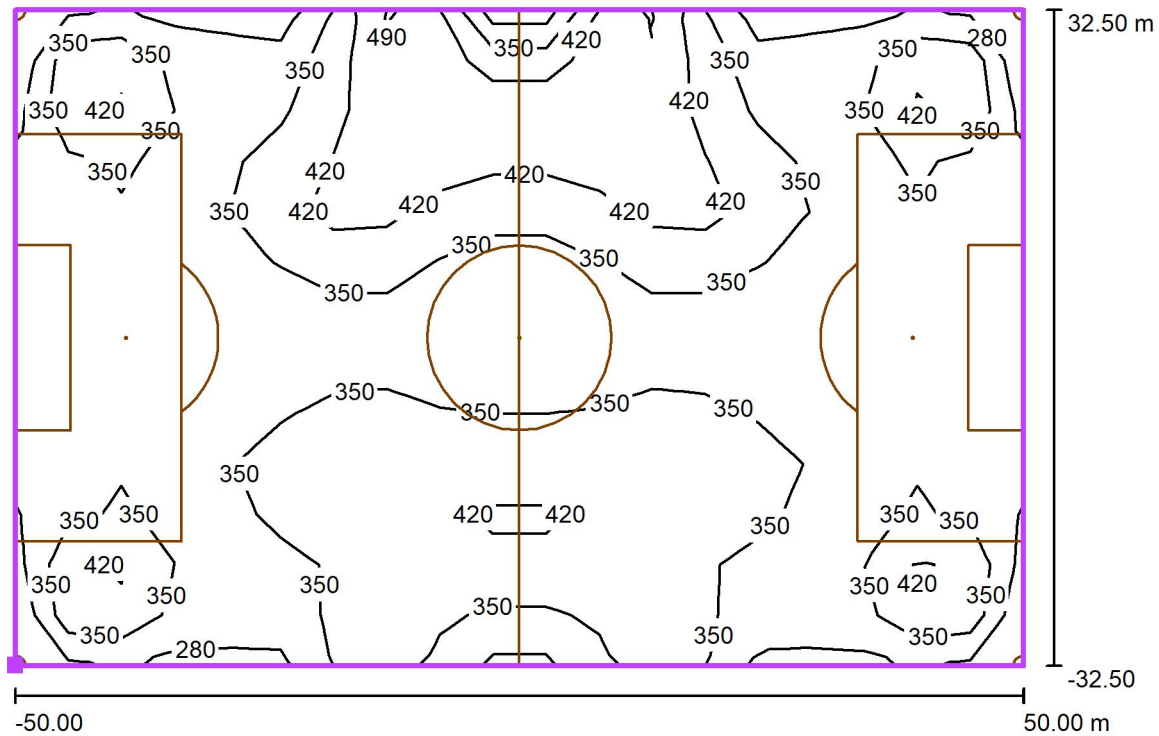
No.	Type	$E_{av}$ [lx]	$E_{min}$ [lx]	$E_{max}$ [lx]	$u0$	$E_{min} / E_{max}$	$E_{h\ m} / E_m$	H [m]	Camera
1	horizontal	360	260	567	0.72	0.46	/	0.000	/

$E_{h\ m} / E_m$  = Relationship between middle horizontal and vertical illuminance, H = Measuring Height

DISANO Adria

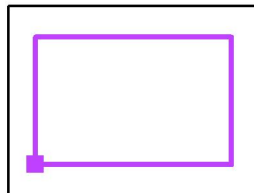
 Operator Dimitrij Hrast, dipl.ing.el.  
 Telephone  
 Fax  
 e-Mail

## Zunanje prizorišče 1 / Nogometno igrišče 1 Raster izračuna (PA) / Isolines (E, Horizontal)



Values in Lux, Scale 1 : 750

Position of surface in external scene:  
 Marked point: (-50.000 m, -32.500 m, 0.000 m)



Grid: 19 x 13 Points

 $E_{av}$  [lx]  
 360

 $E_{min}$  [lx]  
 260

 $E_{max}$  [lx]  
 567

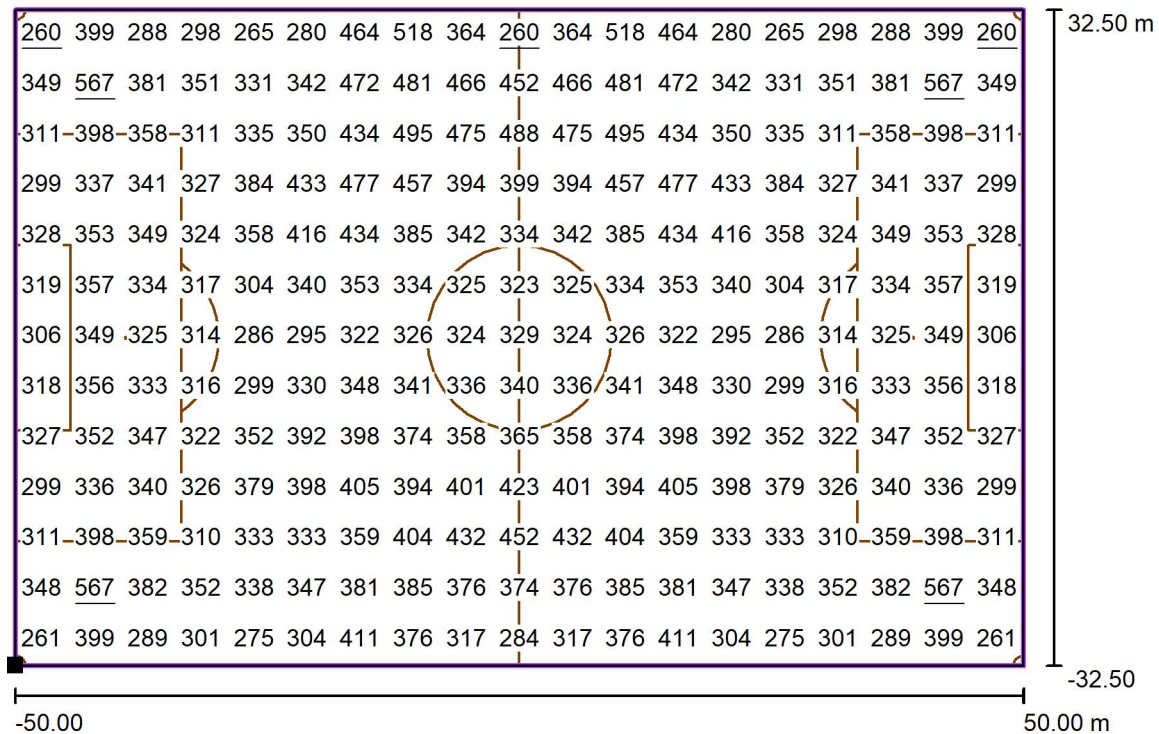
 $u_0$   
 0.72

 $E_{min} / E_{max}$   
 0.46

DISANO Adria

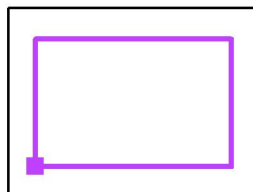
Operator Dimitrij Hrast, dipl.ing.el.  
 Telephone  
 Fax  
 e-Mail

## Zunanje prizorišče 1 / Nogometno igrišče 1 Raster izračuna (PA) / Value Chart (E, Horizontal)



Values in Lux, Scale 1 : 750

Position of surface in external scene:  
 Marked point: (-50.000 m, -32.500 m,  
 0.000 m)



Grid: 19 x 13 Points

$E_{av}$  [lx]  
 360

$E_{min}$  [lx]  
 260

$E_{max}$  [lx]  
 567

$u_0$   
 0.72

$E_{min} / E_{max}$   
 0.46